

CHARLES A.F. KUNTZ, ET UX
 DB. 1660 PG. 2203
 TM 98--(10)--1
 PIN NO. 398-17-8675
 ZONED: AR-2

DAVID WILLIAM TROUT
 DB. 1171 PG. 948
 TM 98--(6)--B
 PIN NO. 398-19-0576
 ZONED: AR-2

DAHL, TRUSTEES
 DB. 1889 PG. 690
 TM 98--(11)--4
 PIN NO. 398-19-7680
 ZONED: AR-2

N 271290
 E 2241790

JENNIFER O. TATE
 WB. 113 PG. 79
 TM 98--25--6771
 ZONED: AR-2

MOUTRIE
 D.B. 1402/1585
 HERTZ SUBDIVISION
 PIN NO. 398-29-8055
 ZONED: AR-2

10.935 ACRES
 ORIGINAL AREA
 ORIGINAL PIN NO. 398-29-1870
 TM 98--(6)--A
 DB. 1156 PG. 724
 ZONED: AR-2

OLD PROPERTY LINE
 HEREBY DELETED

ORIGINAL
 PIN NO. 398-39-2281
 INSTRUMENT NO. 20030914-0105649
 2.22 ACRES
 OLD PROPERTY LINE HEREBY DELETED

CAELI FARMS, L.L.C.
 D.B. 1615/2264
 TM. 98--23--7053
 ZONED: AR-2

ADJUSTED T.M. 98-(6)--A
 PIN NO. 398-29-1870
 28.33911 ACRES
 ZONED: AR-2

ORIGINAL
 PIN NO. 398-39-5951
 TM. 98--28--11783 ACRES
 INSTRUMENT NO. 20030914-0105649

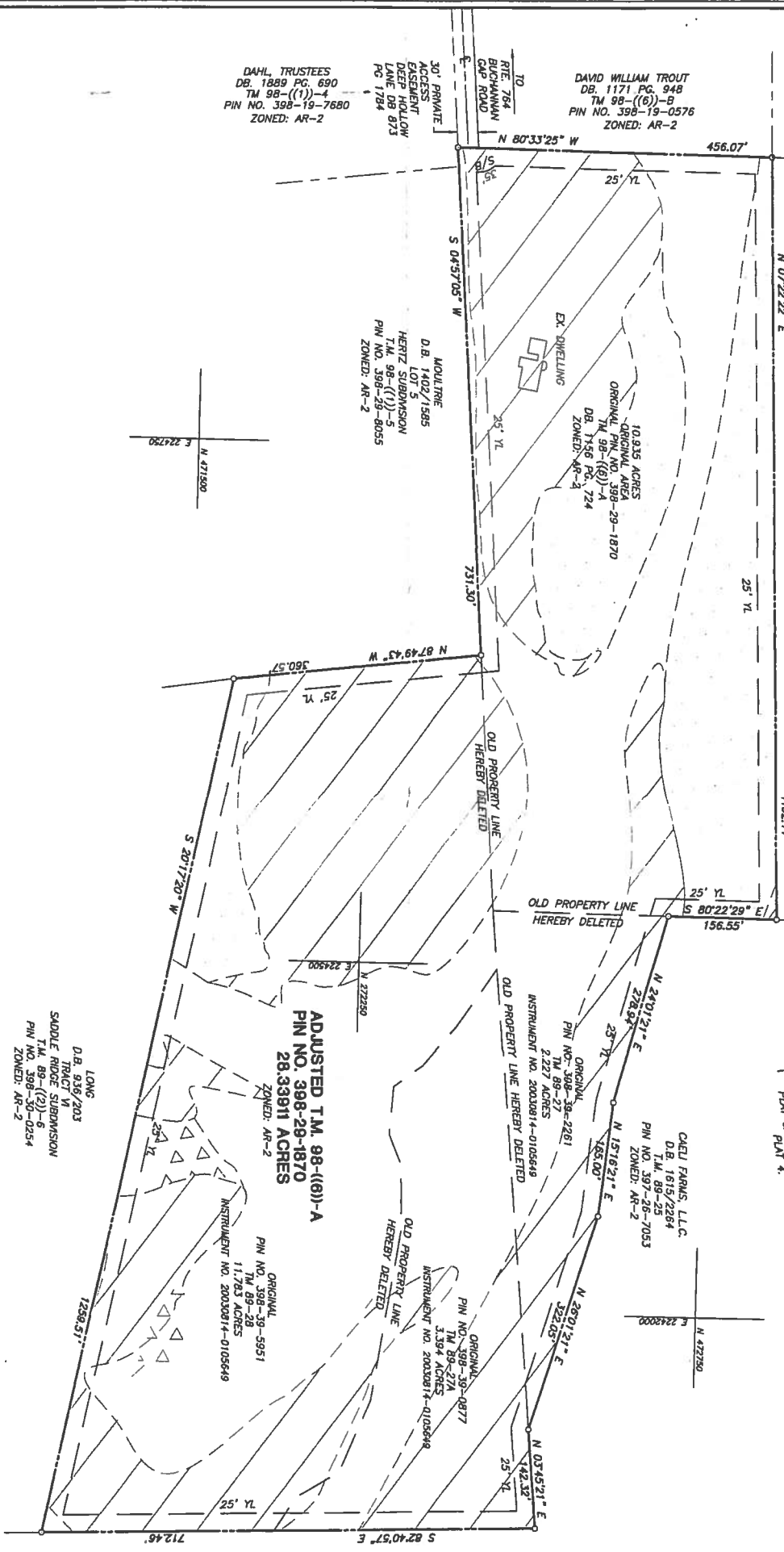
ORIGINAL
 PIN NO. 398-39-0877
 TM. 98--27A--3384 ACRES
 INSTRUMENT NO. 20030914-0105649

LONG
 D.B. 936/203
 SADDLE RIDGE SUBDIVISION
 TM. 98--(20)--0254
 PIN NO. 398-20-0254
 ZONED: AR-2

PLAT MERIDIAN PLAT
 OF SADDLE RIDGE SUBDIVISION
 PLAT CABINET C. SLIDE 517,
 PLAT CABINET 4.

ADJUSTED GREENWAY
 DISTRICT LEGEND

- HIGHLY SENSITIVE
- SENSITIVE
- MODERATELY
- NO OVERLAY



DATE: 12/09/03
 SCALE: 1" = 100'
 DESIGNED BY: SWR
 FILE NO. 3161K
 SHEET 2 OF 2

BOUNDARY LINE ADJUSTMENT PLAT/CONSOLIDATION
 OF LAND STANDING IN THE NAME OF
**GEORGE W. KODITEK AND
 KATHY J. KODITEK**
 BLUE RIDGE ELECTION DISTRICT, LOUDOUN COUNTY, VIRGINIA



DATE	REVISION
1/09/04	PER COUNTY COMMENTS
2/03/04	PER COUNTY COMMENTS
06/08/04	PER COUNTY COMMENTS
11/23/04	PER COUNTY COMMENTS



GREENWAY ENGINEERING
 181 Windy Hill Lane
 Winchester, Virginia 22602
 Telephone 540-662-4185
 Fax 540-725-8539

