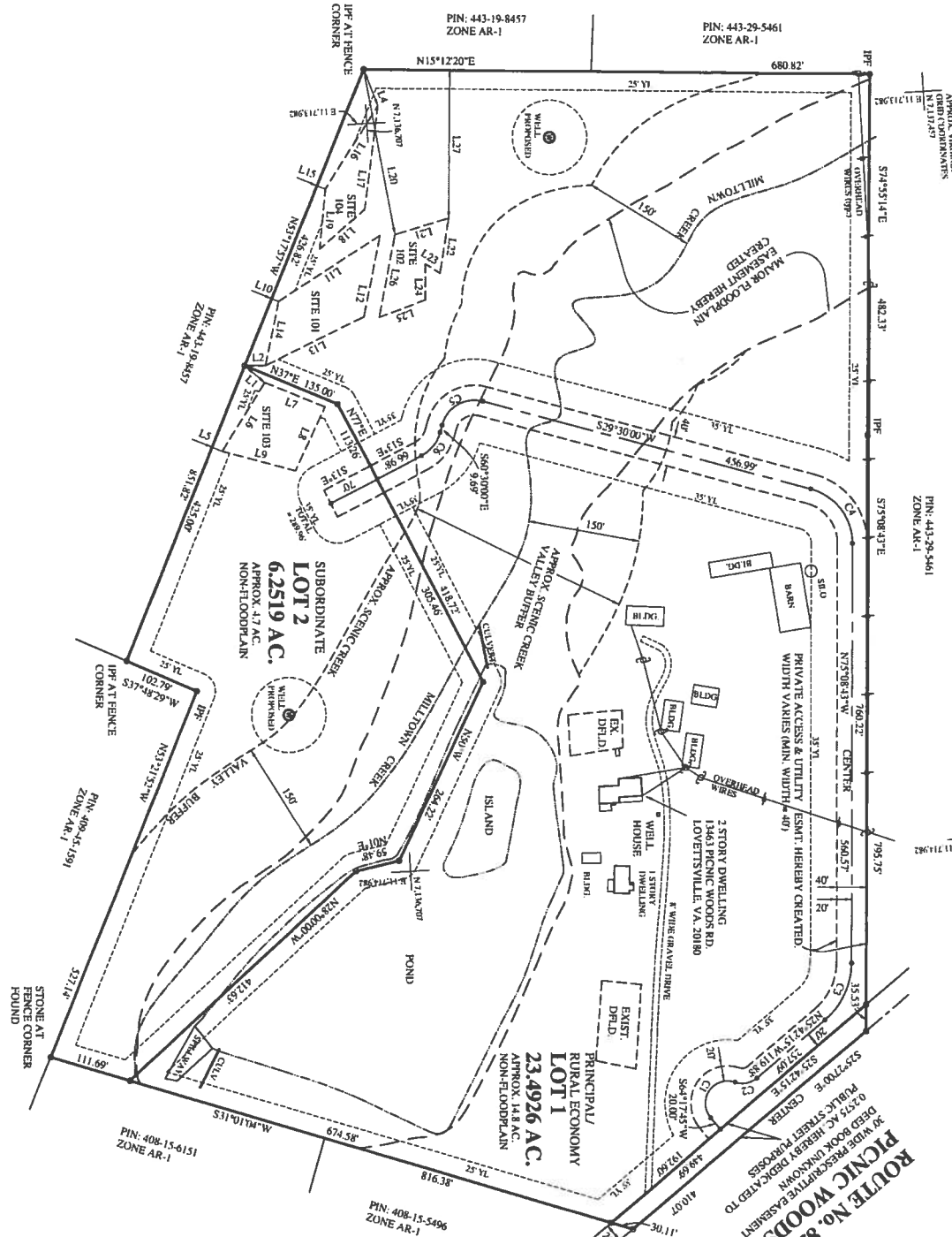


CURVE TABLE

CURVE	ARC	RADIUS	DELTA	TAN.	CHORD BRG.	CHORD
C1	78.54°	30.00'	150.0000'	111.96'	S80°42'15"E	57.96'
C2	31.42°	30.00'	60.0000'	17.37'	N64°17'45"E	30.00'
C3	86.35°	100.00'	99.5328'	46.00'	N69°25'39"W	83.64'
C4	98.64°	75.00'	75.2117'	37.92'	S67°10'28"W	51.66'
C5	70.89°	45.00'	90.0000'	45.00'	S15°30'00"E	63.64'
C6	41.85°	50.00'	47.5000'	22.00'	N58°45'00"W	40.27'



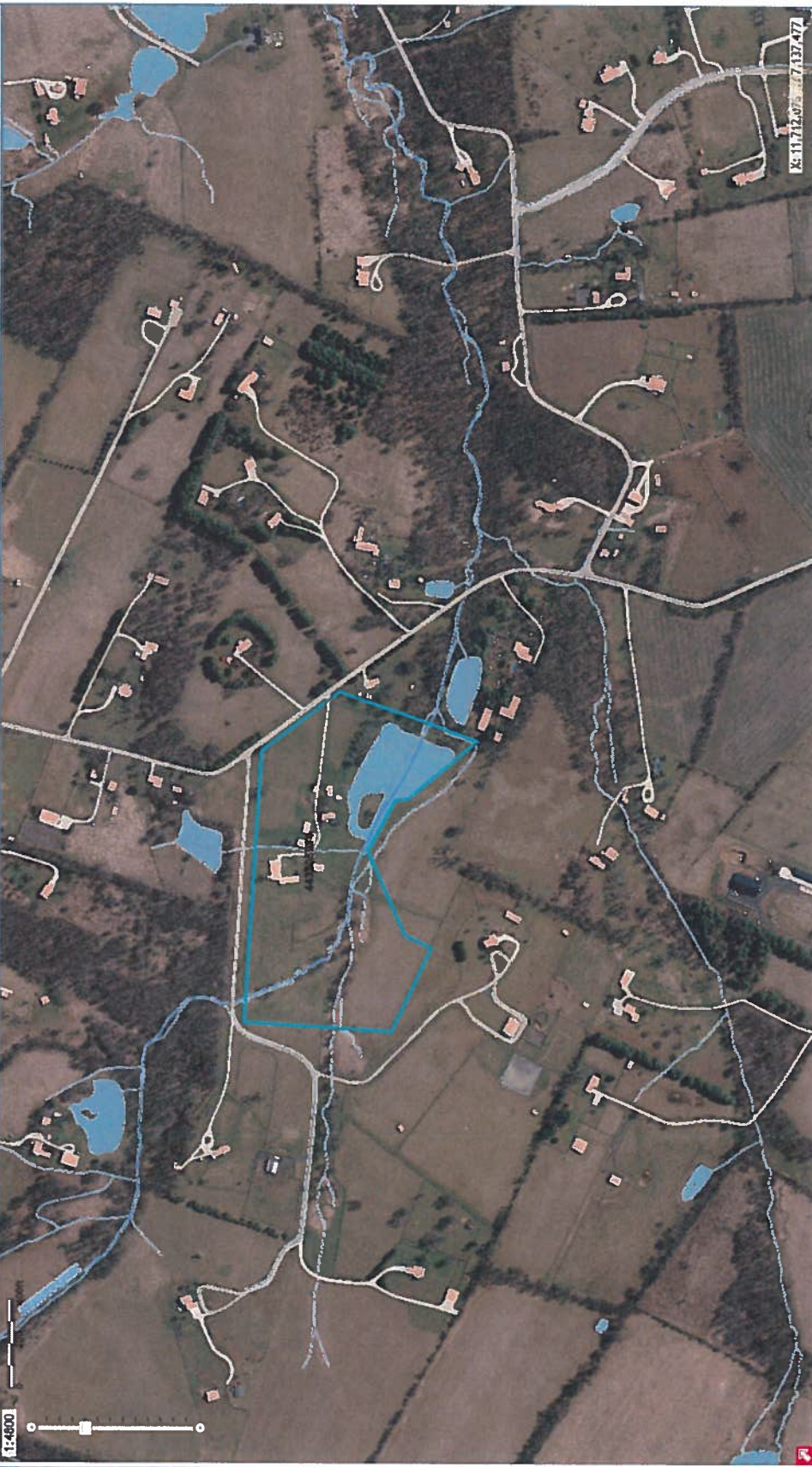
SUBDIVISION WAIVER PLAT
 PRINCIPAL/SUBORDINATE SUBDIVISION OPTION
 LAND OF
COLIN W. PAYNE
 CATOCTIN ELECTION DISTRICT
 LOUDOUN COUNTY, VIRGINIA
 SCALE 1" = 100'
 NOVEMBER 6, 2007

NO.	REVISION	DATE
1	ADDED SITES 103 & 104	11/27/07
2	DELETED LOT 2	01/07/08
3	REVISION TO ACCORDANCE WITH COUNTY COMMITTEE TO DATE 05/16/08	01/10/08
4	REVISION TO ACCORDANCE WITH COUNTY COMMITTEE TO DATE 01/23/09	02/27/09

HORTON & TAYLOR, INC.
 LAND SURVEYING
 15-A LOUDOUN STREET, S.W.
 P.O. BOX 301
 LEESBURG, VIRGINIA 20176-0301
 PHONE: 703-773-8883

LINE TABLE

LINE	BEARING	DIST.
L1	S54°38'38"W	35.08'
L2	N14°31'41"E	22.88'
L3	N63°10'57"W	160.46'
L4	S83°00'15"W	52.06'
L5	S58°42'03"W	141.74'
L6	N40°22'19"W	108.05'
L7	N48°12'29"E	87.15'
L8	S38°21'20"W	91.16'
L9	S29°25'56"W	101.90'
L10	S58°42'03"W	101.00'
L11	N18°10'48"W	162.40'
L12	S64°45'04"W	111.03'
L13	S17°33'49"W	146.94'
L14	N63°42'44"W	87.50'
L15	S38°42'03"W	12.00'
L16	N42°53'03"W	132.27'
L17	S67°51'16"E	140.17'
L18	S28°27'43"E	80.02'
L19	N66°56'33"W	80.35'
L20	S86°03'14"E	224.65'
L21	N02°11'57"W	74.61'
L22	S66°30'03"E	74.26'
L23	S47°08'51"W	23.81'
L24	S17°58'29"E	46.11'
L25	S03°46'03"E	66.28'
L26	N58°23'28"W	112.42'
L27	N78°47'40"W	197.96'



Map Search Tools Results

▼ Contents

- Contents Tips
- LandRecords
- Districts
- Districts/Merroll
- Election/Districts
- Environmental/Health
- Environmental
- PublicSafety
- Planning
- Schools
- Utilities
- Zoning
- Base/Layers
- Imagery/2016
- Imagery/2017

Change Transparency:

see metadata

Legend

