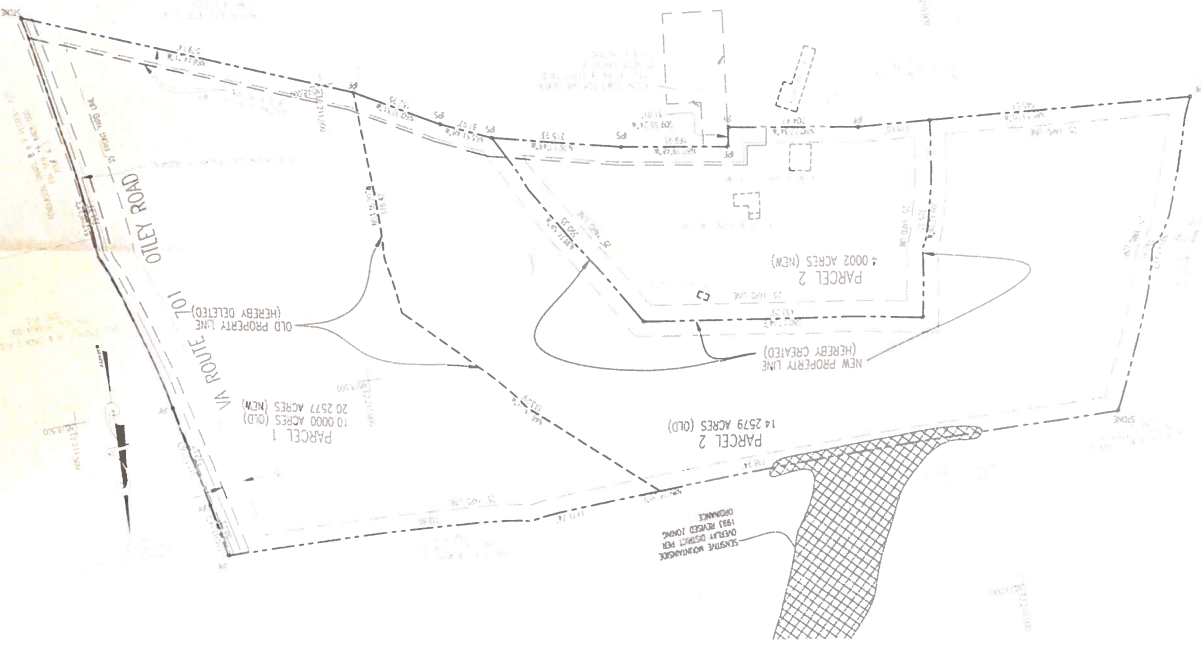


| NO. | SHEET NUMBER AND REVISION DESCRIPTION | DATE |
|-----|---------------------------------------|---------|
| 1 | PER CO-COMMENTS DATED 3-31-06 | 4-24-06 |
| | | |
| | | |
| | | |



| |
|-------------------------|
| SCALE: 1" = 100' |
| DATE: 2/16/06 |
| CHECKED BY: [Signature] |
| DRAWN BY: [Signature] |
| SHEET NO. 2 OF 2 |



NR SILCOTT SPRINGS PARCELS 1 AND 2
HARRINGTON PROPERTY
 BOUNDARY LINE ADJUSTMENT
 BLUE RIDGE ELECTION DISTRICT
 LOUDOUN COUNTY, VIRGINIA

THE KDL GROUP LLC
 604 S KING STREET, SUITE 100-C
 HARRINGTON, VIRGINIA 20174
 TEL: 703 771-4073
 WWW.KDLGROUP.COM