

# DRH Design Group, Inc.

ENGINEERS • PLANNERS • SURVEYORS

36 Rock Pointe Lane • Suite 200  
Warrenton, Virginia 20185  
640-348-8385  
640-348-8580 fax

[www.drhdesigngroup.com](http://www.drhdesigngroup.com)

THIS DRAWING IS A SERVICE DOCUMENT OF DRH DESIGN GROUP, INC. AND MAY NOT BE USED OR REPRODUCED WITHOUT THE WRITTEN PERMISSION OF THE REGISTERED SURVEYOR.

ALERTING UTILITIES LOCATIONS ON THIS PLAN AND TAKEN FROM AVAILABLE RECORDS AND/OR FIELD OBSERVATIONS. FOR EXACT LOCATIONS OF UNDETERMINED UTILITIES, NOTIFY YOUR UTILITY AT 1-800-327-7771, TO BE SURE BEFORE THE START OF EXCAVATION OR CONSTRUCTION.

LOCATION AND DEPTH OF ALL EXISTING UNDERGROUND UTILITIES TO BE VERIFIED BY CONTRACTOR PRIOR TO CONSTRUCTION. INTERFERENCE OR DISRUPTION OF SAME WILL NOT BE THE RESPONSIBILITY OF DRH DESIGN GROUP, INC.

## SURVEYOR'S CERTIFICATE

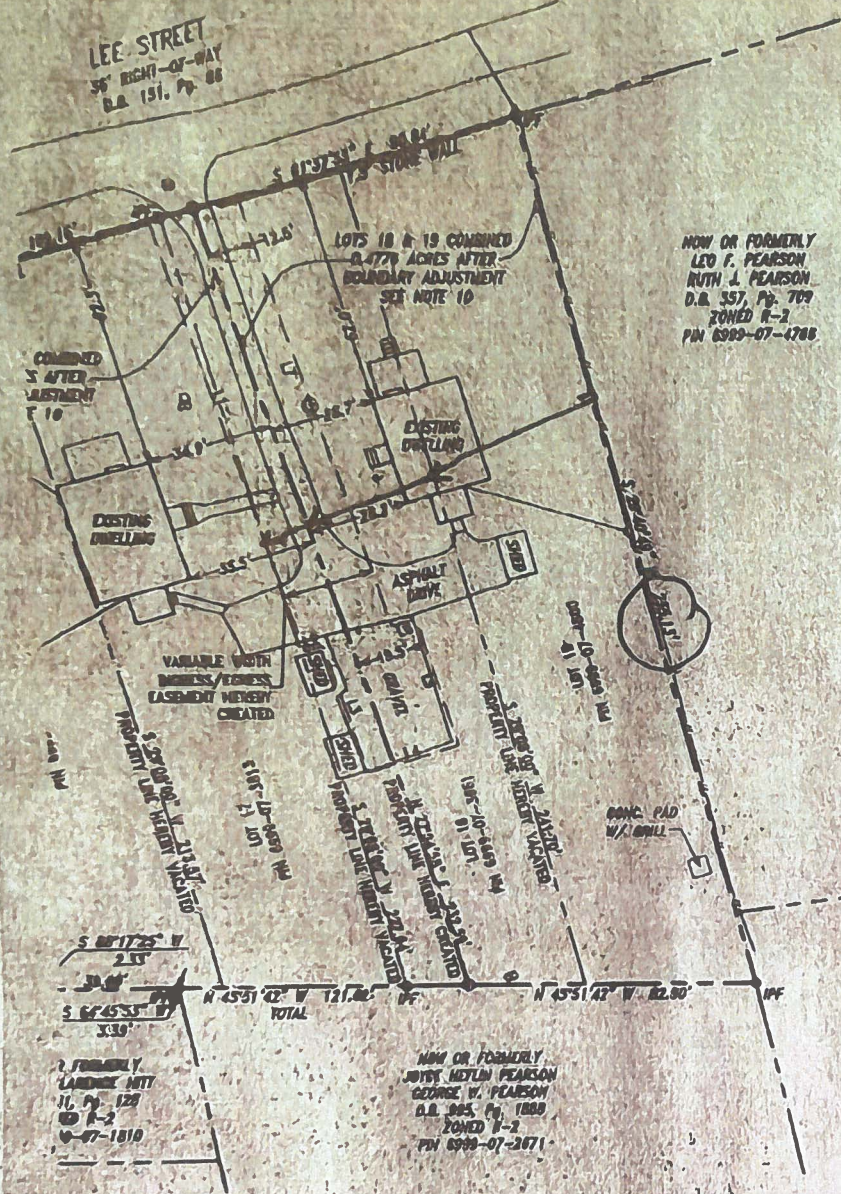
I, DAVID R. HALL, A DULY LICENSED LAND SURVEYOR IN THE COMMONWEALTH OF VIRGINIA (REGISTRATION NO. 2246) DO HEREBY CERTIFY, TO THE BEST OF MY KNOWLEDGE AND BELIEF, THAT THE SURVEY SHOWN HEREON IS BASED UPON AN ACTUAL SURVEY MADE ON THE GROUND AND MEETS ALL MINIMUM STANDARDS AND PROCEDURES FOR LAND BOUNDARY SURVEYING IN THE COMMONWEALTH OF VIRGINIA.



BOUNDARY LINE ADJUSTMENT  
BETWEEN THE ADJACENT PROPERTIES OF  
JOYCE HEFLIN PEARSON  
(FORMERLY JOYCE W. HEFLIN)  
&  
GEORGE W. PEARSON  
SITUATED IN THE TOWN OF THE PLAINS,  
FAULKNER COUNTY, VIRGINIA



COMPUTED BY	RJB
DRAWN BY	JDK
CHECKED BY	DRM
DATE	8/9/09
JOB NO.	209065
SHEET	1 OF 1
REVISED	



NOW OR FORMERLY  
LEO F. PEARSON  
RUTH J. PEARSON  
D.B. 357, Pg. 709  
ZONED R-2  
PIN 6999-07-4788

NOW OR FORMERLY  
JOYCE HEFLIN PEARSON  
GEORGE W. PEARSON  
D.B. 365, Pg. 1889  
ZONED R-2  
PIN 6999-07-2671

FORMERLY  
LANDING HTY  
11, Pg. 128  
R-2  
6-07-1810

**LEGEND**

These standard symbols will be found in the drawing.

- SATELLITE DISH
- UTILITY POLE
- CLEANOUT
- SANITARY MANHOLE
- WATER METER
- IRON PIPE SET
- WOOD FENCE
- OVERHEAD UTILITY LINE
- IRON PIPE FOUND

**INGRESS/EGRESS CASEMENT LINE TABLE**

LINE	BEARING	DISTANCE
L1	S 27° 04' 58\" W	124.79'
L2	S 62° 55' 02\" E	5.00'
L3	S 27° 04' 58\" W	39.00'
L4	S 62° 55' 02\" E	27.00'
L5	N 27° 04' 58\" E	39.00'
L6	N 62° 55' 02\" W	7.00'
L7	N 27° 04' 58\" E	124.22'

DS  
HETG