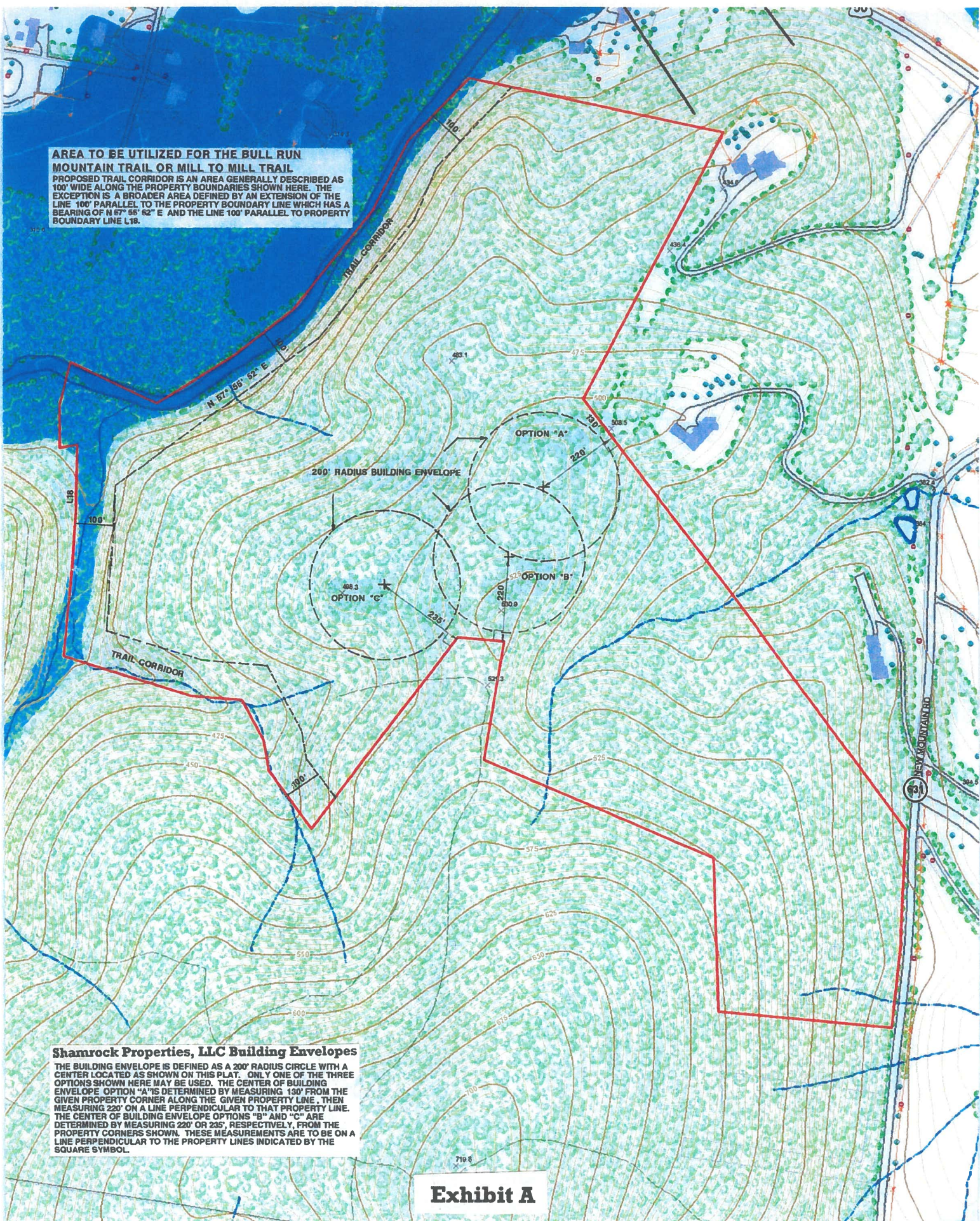


AREA TO BE UTILIZED FOR THE BULL RUN MOUNTAIN TRAIL OR MILL TO MILL TRAIL
 PROPOSED TRAIL CORRIDOR IS AN AREA GENERALLY DESCRIBED AS 100' WIDE ALONG THE PROPERTY BOUNDARIES SHOWN HERE. THE EXCEPTION IS A BROADER AREA DEFINED BY AN EXTENSION OF THE LINE 100' PARALLEL TO THE PROPERTY BOUNDARY LINE WHICH HAS A BEARING OF N 67° 56' 52" E AND THE LINE 100' PARALLEL TO PROPERTY BOUNDARY LINE L18.



Shamrock Properties, LLC Building Envelopes
 THE BUILDING ENVELOPE IS DEFINED AS A 200' RADIUS CIRCLE WITH A CENTER LOCATED AS SHOWN ON THIS PLAT. ONLY ONE OF THE THREE OPTIONS SHOWN HERE MAY BE USED. THE CENTER OF BUILDING ENVELOPE OPTION "A" IS DETERMINED BY MEASURING 130' FROM THE GIVEN PROPERTY CORNER ALONG THE GIVEN PROPERTY LINE, THEN MEASURING 220' ON A LINE PERPENDICULAR TO THAT PROPERTY LINE. THE CENTER OF BUILDING ENVELOPE OPTIONS "B" AND "C" ARE DETERMINED BY MEASURING 220' OR 235', RESPECTIVELY, FROM THE PROPERTY CORNERS SHOWN. THESE MEASUREMENTS ARE TO BE ON A LINE PERPENDICULAR TO THE PROPERTY LINES INDICATED BY THE SQUARE SYMBOL.

Exhibit A