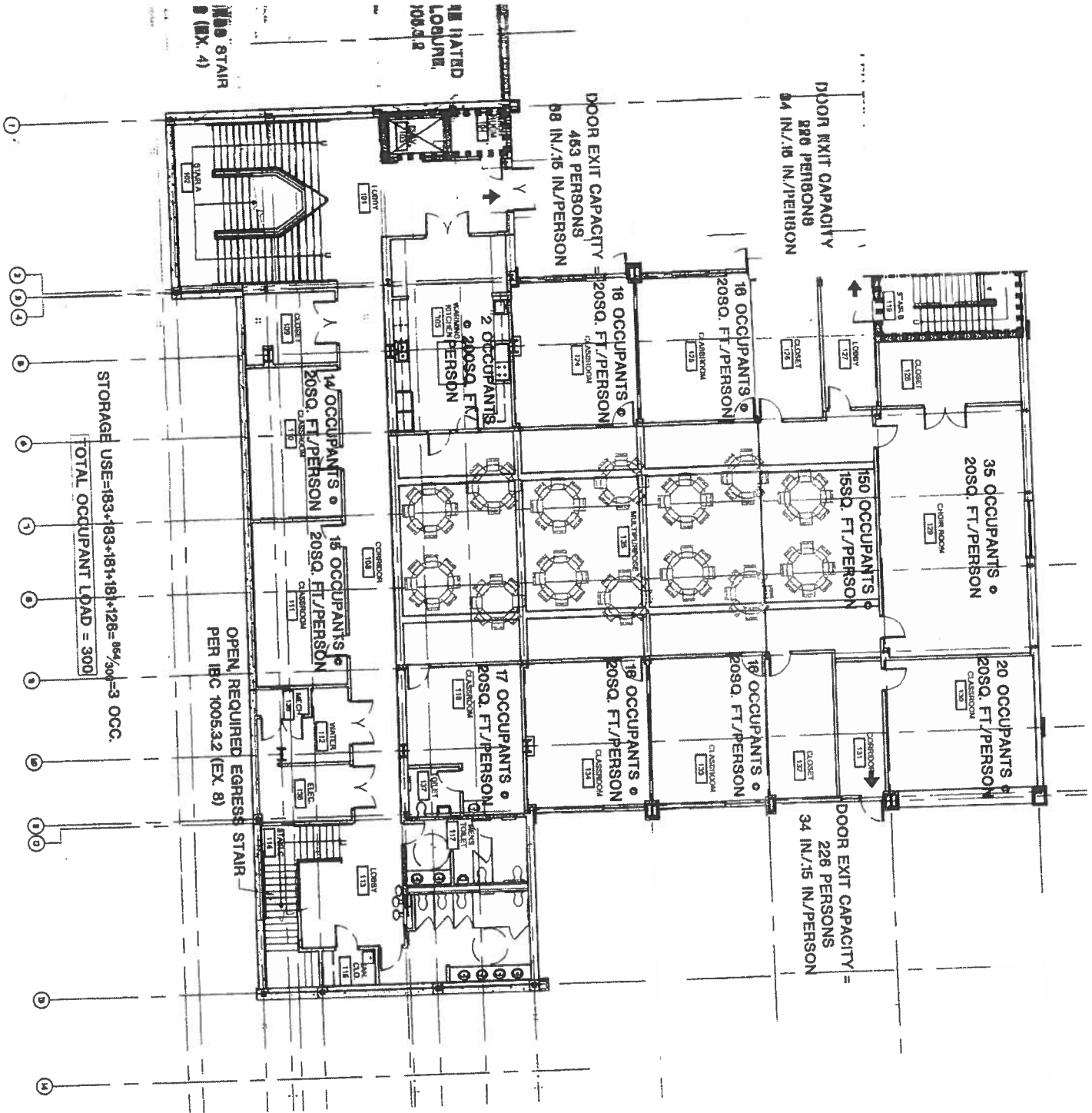


LOWER LEVEL-ALT



STORAGE USE = 183 + 183 + 181 + 181 + 128 = 864 / 300 = 3 OCC.
 TOTAL OCCUPANT LOAD = 300

OPEN, REQUIRED EGRESS STAIR
 PER IBC 1005.3.2 (EX. 8)

DOOR EXIT CAPACITY
 520 PERSONS
 34 IN./15 IN./PERSON

DOOR EXIT CAPACITY =
 226 PERSONS
 34 IN./15 IN./PERSON

16 OCCUPANTS
 2050 SQ. FT./PERSON

18 OCCUPANTS
 2090 SQ. FT./PERSON

150 OCCUPANTS
 1550 SQ. FT./PERSON

35 OCCUPANTS
 2050 SQ. FT./PERSON

18 OCCUPANTS
 2050 SQ. FT./PERSON

19 OCCUPANTS
 2090 SQ. FT./PERSON

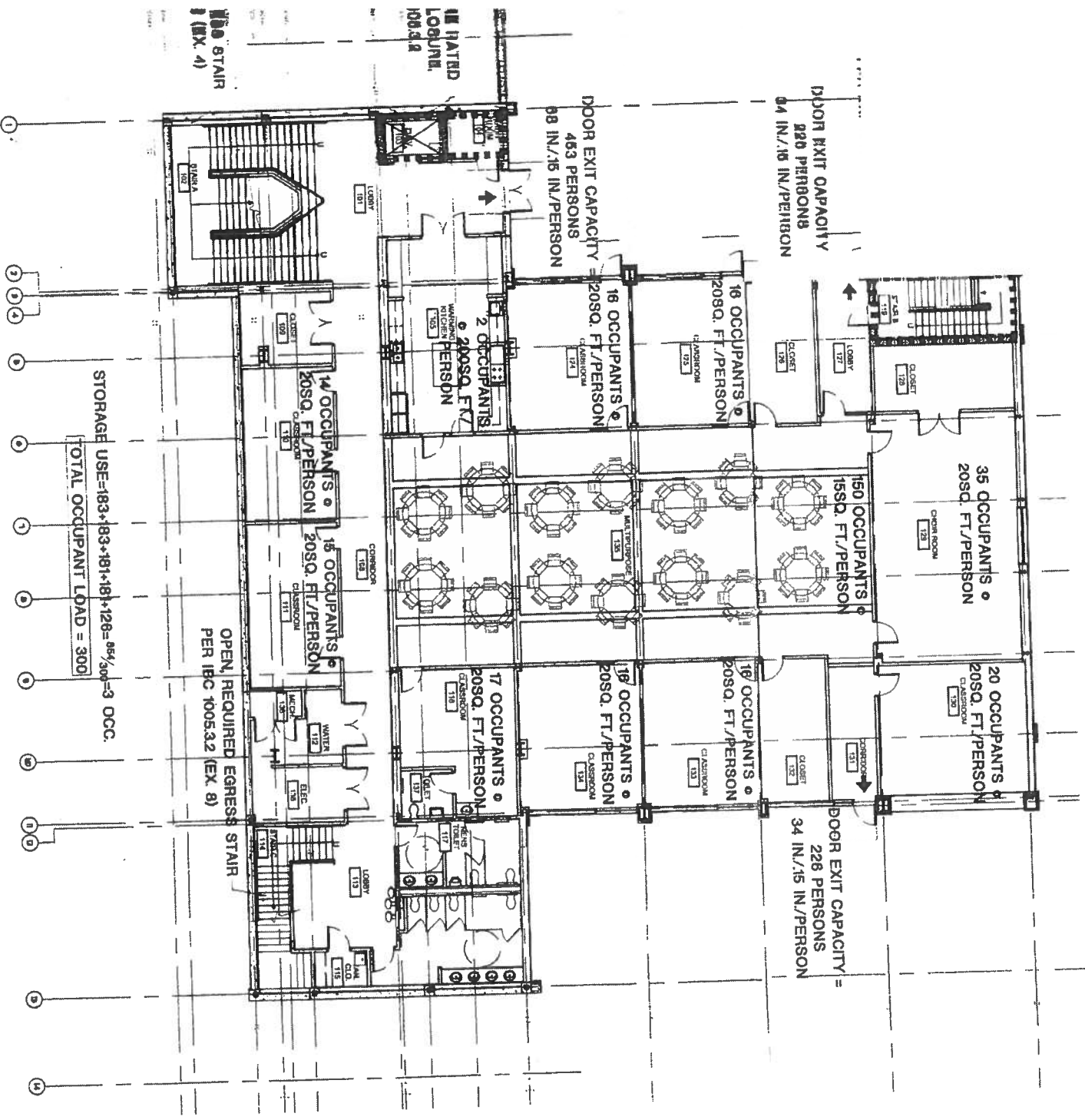
20 OCCUPANTS
 2050 SQ. FT./PERSON

17 OCCUPANTS
 2050 SQ. FT./PERSON

16 WATER
 LOBBY
 1005.4.2

16 STAIR
 (EX. 4)

LOWER LEVEL-ALT



STORAGE USE=183+183+181+181+128=654/300=3 OCC.
 TOTAL OCCUPANT LOAD = 3000

OPEN, REQUIRED EGRESS PER IBC 1005.3.2 (EX. 8)

1 2 3 4 5 6 7 8 9 10 11 12 13 14