

Handwritten initials and a circled 'P' or 'R'.

CORNWALL STREET, N.W.
VARIABLE WIDTH

N 82°20'00" W

169.10'

2 STORY
FRAME DWL.
#210

ELIZABETH HARING
ZONED: RH-D
USE: RESIDENTIAL

LOT 5B
6,450 sq. ft

N 28°00'10" E 128.00'

128.00'

S 28°00'10" W 128.00'

50.00'

N 82°20'00" W

H 593.721

E 329.738

LOT 5A
37,177 sq. ft

12' EASEMENT FOR
INGRESS & EGRESS
(D.B. 11-F, PG. 267)

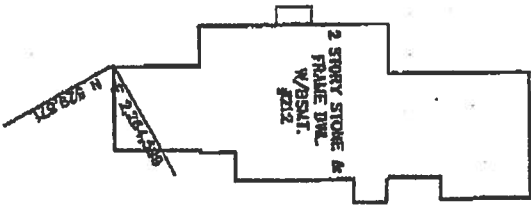
N 28°43'00" E

WILEY F. & BARBARA D. RUSSELL
ZONED: RH-D
USE: RESIDENTIAL
PIN: 231-67-4187
LCTM: 48-A-6-4

10' SANITARY SEWER EASEMENT
(D.B. 588, PG. 439)

H 529.871

E 228.871



2 STORY FRAME DWL.
W/ PORCH.
#212

123.78'

252.78'

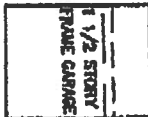
ZONED: RH-D

ZONED: R-6

KHUM DEBRY TONIC

288.28'

ZONED: RH-D



1/2 STORY
FRAME GARAGE

JACKSON PROFESSIONAL
BUILDING, INC.
ZONED: MC
USE: OFFICE BUILDING
PIN: 230-17-49
LCTM: 48-A-44PC
ZONED: MC

S 97°00'30" E

GIBSON-CORNWALL LLC
ZONED: MC
USE: VACANT
PIN: 230-17-6511
LCTM: 48-A-6-5A

166.38'