

ASPHALT HIGHWAY

MEETINGHOUSE LANE
S 21° 55' 09" W 117.75'

2 STY
FRAME BLDG.
44.2' x 39.3'

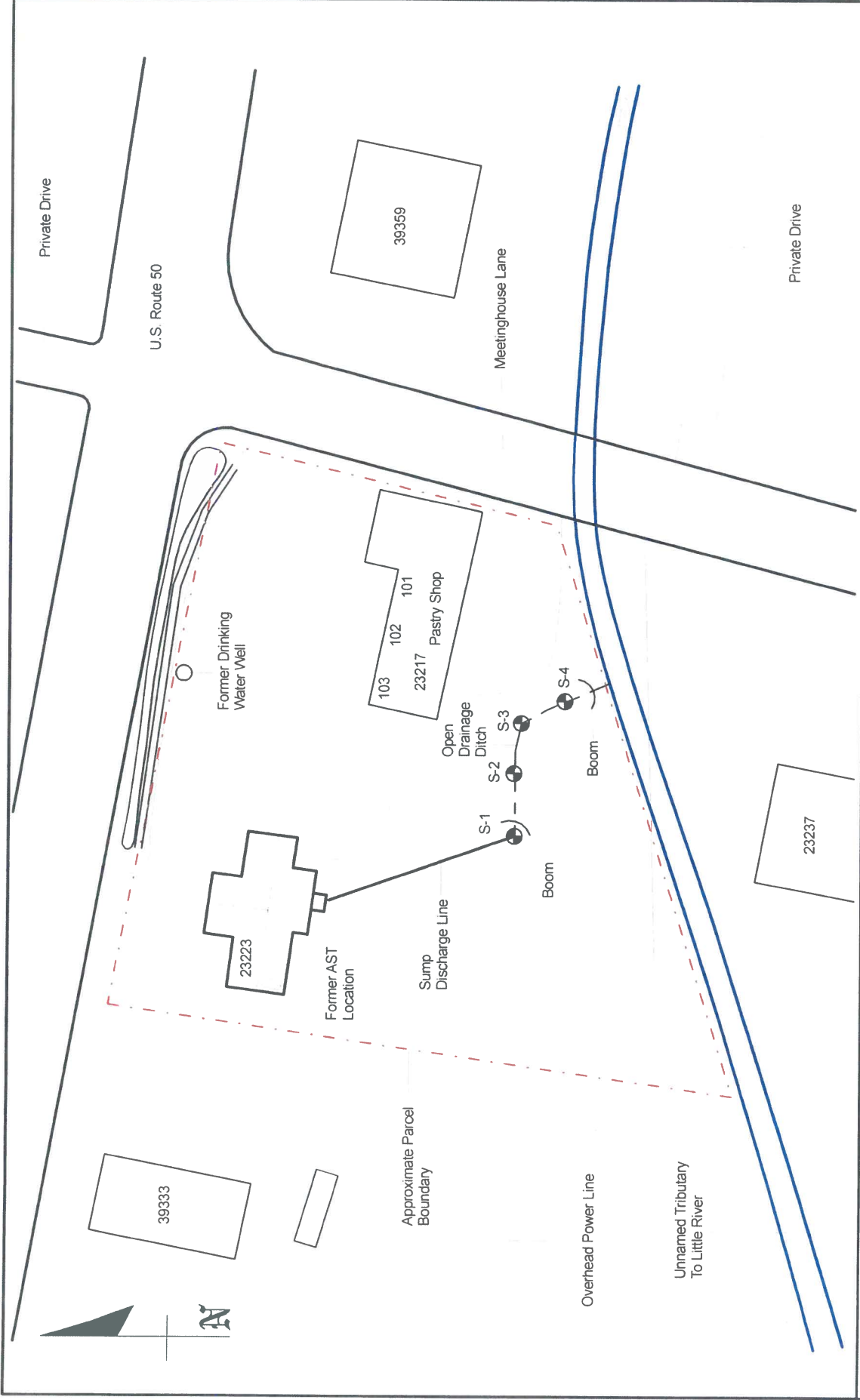
1 STY
FRAME BLDG.
42.0' x 42.0'
FF: 328.52'

2 STY
FRAME
BLDG.
20.3' x 20.3'
FF: 328.06'

29,000 S.F.

S 81° 0' 38" ...
196.05'





SOURCE: GOOGLE EARTH		23233 MEETINGHOUSE LANE ALDIE, VIRGINIA 20105	
DRAWN BY: TAP	CHECKED BY: RMS	SITE DIAGRAM SHOWING SOIL SAMPLING LOCATIONS	
DATE: 5/22/2013	SCALE: NTS	TRIAD PROJECT NO. 07-13-0060	



Land Use Parcel Information

Pin	372404679000
Use Restriction	MULTI USE
Use	COM OFFICE GENERAL
Subcode1	RES SFD
Subcode2	RES SFD

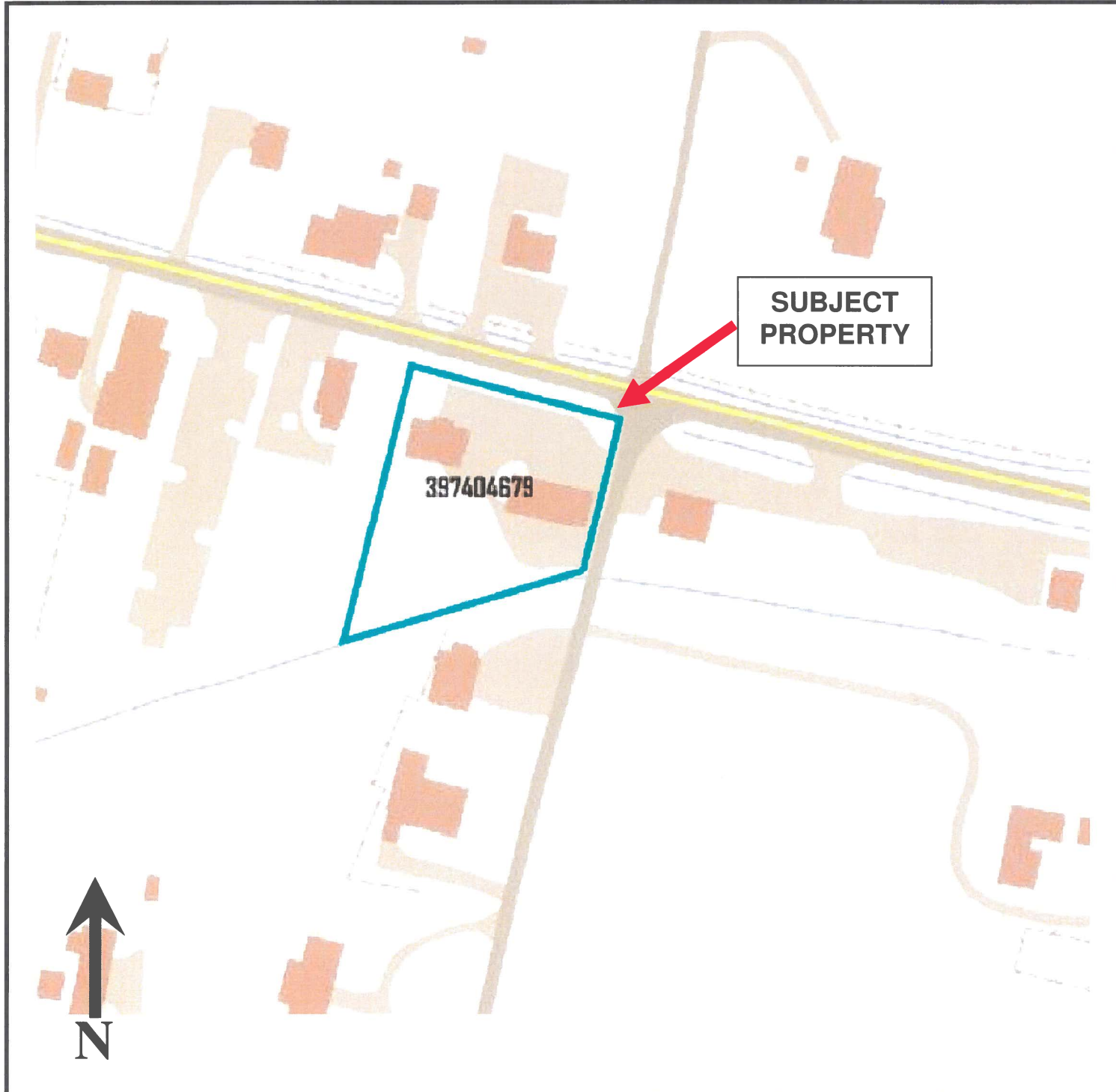
Development Characteristics

Area (sq. Units Existing)	1
Acres	0.7
Developable Percent	100
As of Date:	July 1, 2021

Zoom to

- Legend**
- Existing Land Use**
- Structures**
- Single-Family Detached
 - Single-Family Attached
 - Multi-Family Stacked
 - Multi-Family Attached
 - Group Quarter
 - Retail
 - Hotel
 - Office General
 - Office Medical
 - Light Industrial Flex
 - Heavy Industrial
 - Data Center
 - Other Public
 - Other Non-Public

Loudoun Existing & Approved Development Mapping Tool



**Phase I Environmental
Site Assessment**

**23217 & 23223
Meetinghouse Lane
Aldie, Virginia**

ECS Mid-Atlantic, LLC
14026 Thunderbolt Place, Suite 100
Chantilly, VA 20151



Figure 1

Site Tax Map

**ECS Job No. 01:24026
Not to scale**

Copyright ADC- The Map People
Permitted Use Number 20500774