



N/F WAH FAMILY FARM, L.P.
P.L.N.: 7908-13-4669
D.B. 746, PG. 1694

N/F WAH FAMILY FARM, L.P.
G.P.L.N.: 7908-13-4693
D.B. 746, PG. 1694

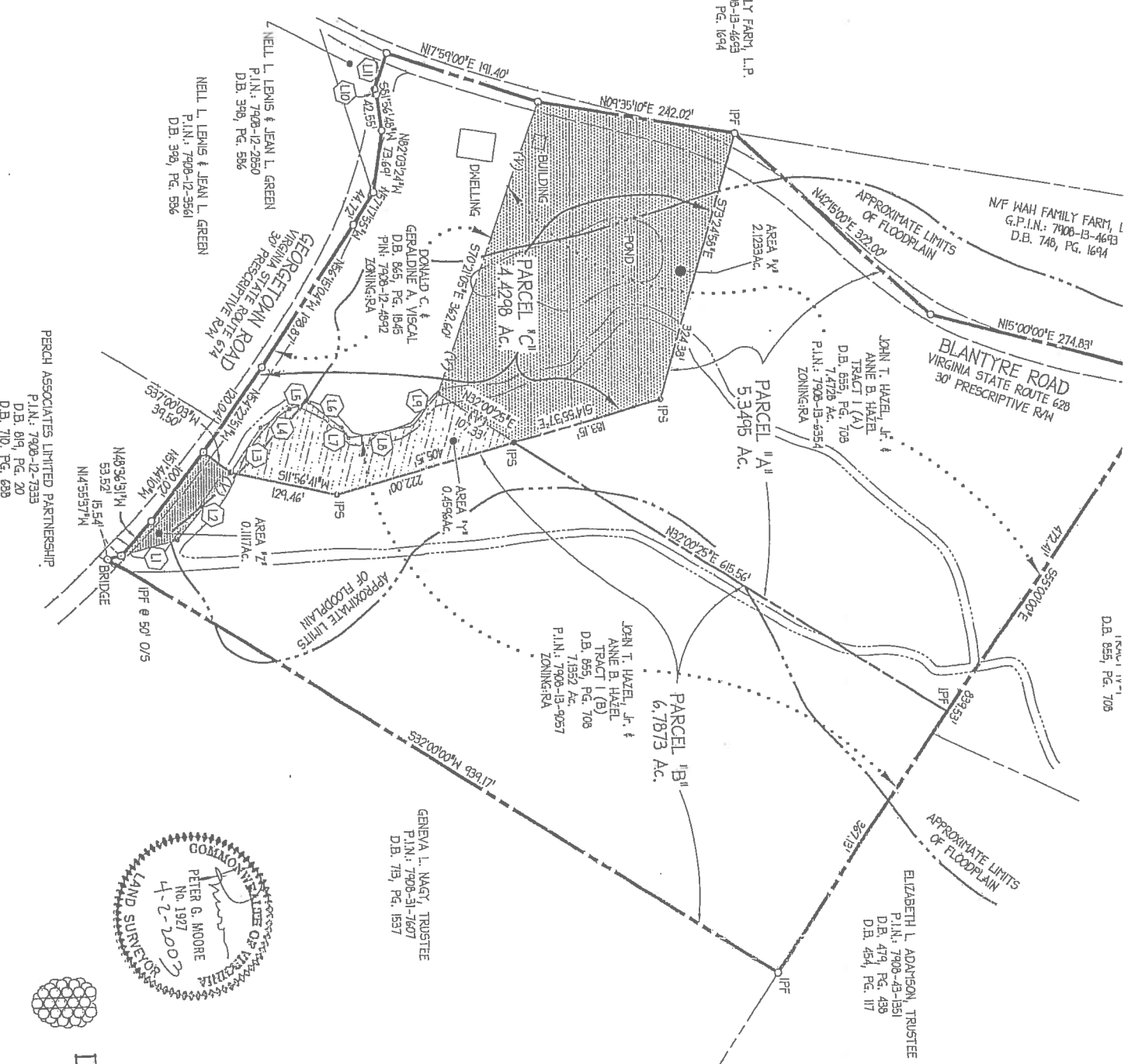
BLANTYRE ROAD
VIRGINIA STATE ROUTE 628
30' PRESCRIPTIVE R/W

1554-117-1
D.B. 855, PG. 706

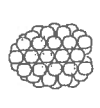
ELIZABETH L. ADAMSON, TRUSTEE
P.L.N.: 7908-43-1351
D.B. 479, PG. 439
D.B. 454, PG. 117

FOR APPROVAL **
1 LOT TRACT I-A:
ACRES) ARE HEREBY
2 ACRES) TO CREATE ONE PARCEL OF
3 BUILDING LOT.
ITY FOR APPROVAL **
OR LOT TRACT I-B:
CEL (B')
4 ACRES) ARE HEREBY
5 ACRES) TO CREATE ONE PARCEL OF
6 BUILDING LOT.

ON
AC
APPROVAL **
VISUAL PROPERTY:
2 LIT
ACRES) ARE HEREBY
CRE(S) TO CREATE ONE PARCEL OF
LIDING LOT.



LINE	DESCRIPTION
L1	
L2	
L3	
L4	
L5	
L6	
L7	
L8	
L9	
L10	
L11	
L12	



BOUNDARY LINE A1
OF THE P&O
JOHN T. HAZEL
ANNE B.
D.B. 855,
DONALD
GERALDINE
D.B. 865,
SCOTT D.
FAVOURER COON
SCALE: 1" = 100' DA
Dewberry & Kilpatrick
ENGINEERS/PLANNERS
8401 ARLINGTON BLVD
10525 BATTLE
MANASSAS, VIR

PERCU ASSOCIATES LIMITED PARTNERSHIP
P.L.N.: 7908-12-7333
D.B. 819, PG. 20
D.B. 710, PG. 633

NELL L. LEWIS & JEAN L. GREEN
P.L.N.: 7908-12-2650
D.B. 399, PG. 586

DONALD C. & GERALDINE A. VISCAL
D.B. 865 PG. 1845
P.L.N.: 7908-12-4892
ZONING: RA

JOHN T. HAZEL, JR. & ANNE B. HAZEL TRACT I (A)
D.B. 855, PG. 706
P.L.N.: 7908-13-0354
ZONING: RA

JOHN T. HAZEL, JR. & ANNE B. HAZEL TRACT I (B)
D.B. 855, PG. 706
P.L.N.: 7908-13-0357
ZONING: RA

GENEVA L. NAGY, TRUSTEE
P.L.N.: 7908-51-7607
D.B. 719, PG. 1937